

# QUERK



**a friendly  
monster  
softie**

instructions  
and full-size  
pattern  
pieces

## guidelines

**This softie is easy to make!** Have fun, and don't be afraid to create your own variations. Print pattern pieces at 100% for 8"X5" softie, or enlarge or reduce as desired (adjust materials size to fit). Pattern pieces' inner line is for stitching and outer line is for cutting. All seams 1/4" unless otherwise stated.

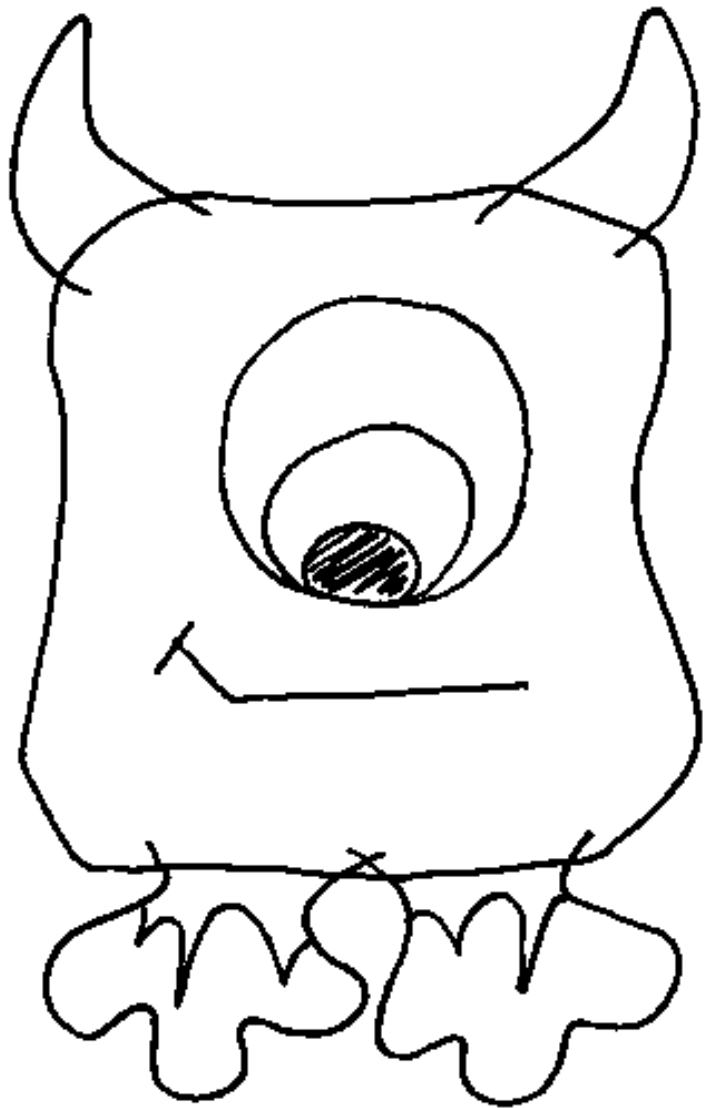
## materials

**Body.** 9"X14" piece (or two 9"X7" pieces) lightweight fleece.

**Horns and feet.** 9"X14" piece (or two 9"X7" pieces) coordinated quilting cotton fabric.

**Facial features and foot hair.** Felt scraps in white (outer eye); green or coordinated color (middle eye and foot hair); and black (center eye). Lightweight double-sided fusible interfacing for eyes (optional).

**Miscellaneous.** Matching thread; black thread for mouth. Poly fiberfill.



## cutting

**2 each** body, left horn, right horn, left foot, and right foot.

**1 each** outer eye, center eye, inner eye, left foot hair, and right foot hair. **If using fusible interfacing, before cutting out eyes,** fuse interfacing to wrong side of eye fabrics according to package directions, leaving paper on one side. Trace pattern pieces onto paper side of interfacing. Cut out 1 each outer eye, center eye, and inner eye. Leave remaining interfacing paper in place for now.

## constructing

### 1. Apply eyes and mouth

- If using fusible interfacing: Starting with outer eye, remove the remaining paper from the fabric, position eye part onto right side of fleece, with the outside fusible (tacky) side down. (Use placement guide, right.) Iron into place per interfacing package instructions (see steps at <http://sewing.about.com/od/applique/ss/applique1.htm>). If not using fusible interfacing: Pin outer eye in place.
- Using straight machine stitch, stitch outer eye down.
- Repeat previous two steps with middle eye and then with center eye.
- Hand-stitch mouth (smiling right or left, as you prefer) using running stitch (for video tutorial, see <http://www.wonderhowto.com/how-to-hand-sew-stitches-228379-4/>).

### 2. Apply foot hair

- Pin left foot hair to the top left foot piece, onto the right side of the fabric. Stitch down at the sides and top, 1/8" from edge (leave open at jagged bottom). Repeat for right foot.

### 3. Sew horns and feet together and stuff

- Pin the two left horn pieces together with right sides of fabric facing. Sew, leaving open where the horn will attach to the body. Clip curves and turn. Repeat process for right horn, left foot, and right foot.
- Stuff left horn with polyester fiberfill and pin closed. Repeat process for right horn, left foot, and right foot. For each appendage, machine sew open ends closed 1/8" from the edge, wrong sides together, leaving edges raw.

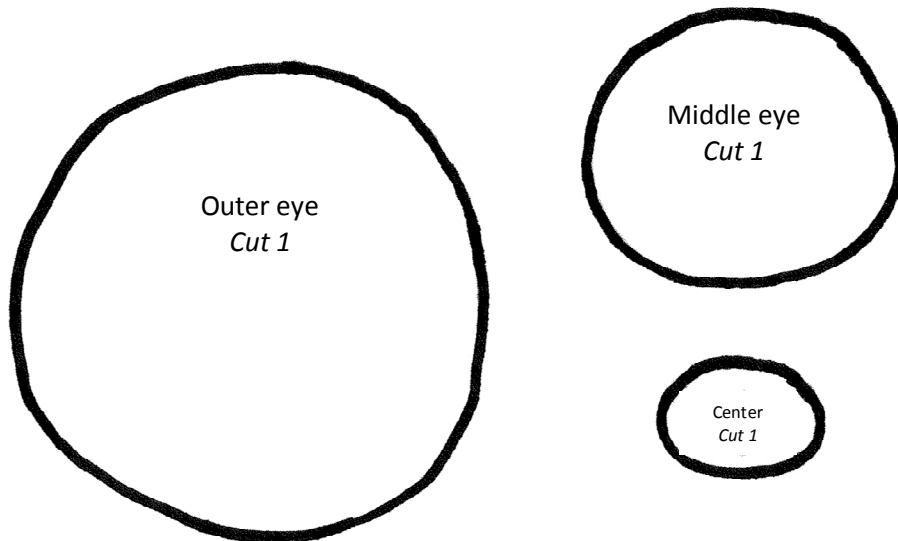
### 4. Sew horns and feet onto body

- Position horns and feet on the front body piece, on the right side of the fabric. Raw ends of horns and feet should be aligned with the outside raw edges of the of the body, with toes and horn tips pointed inward toward the body. The feet should be positioned so that the hair is down against the front body piece; this will ensure it is outward when turned. Pin into place. Stitch 1/8" from the edge to hold horns and feet in place.

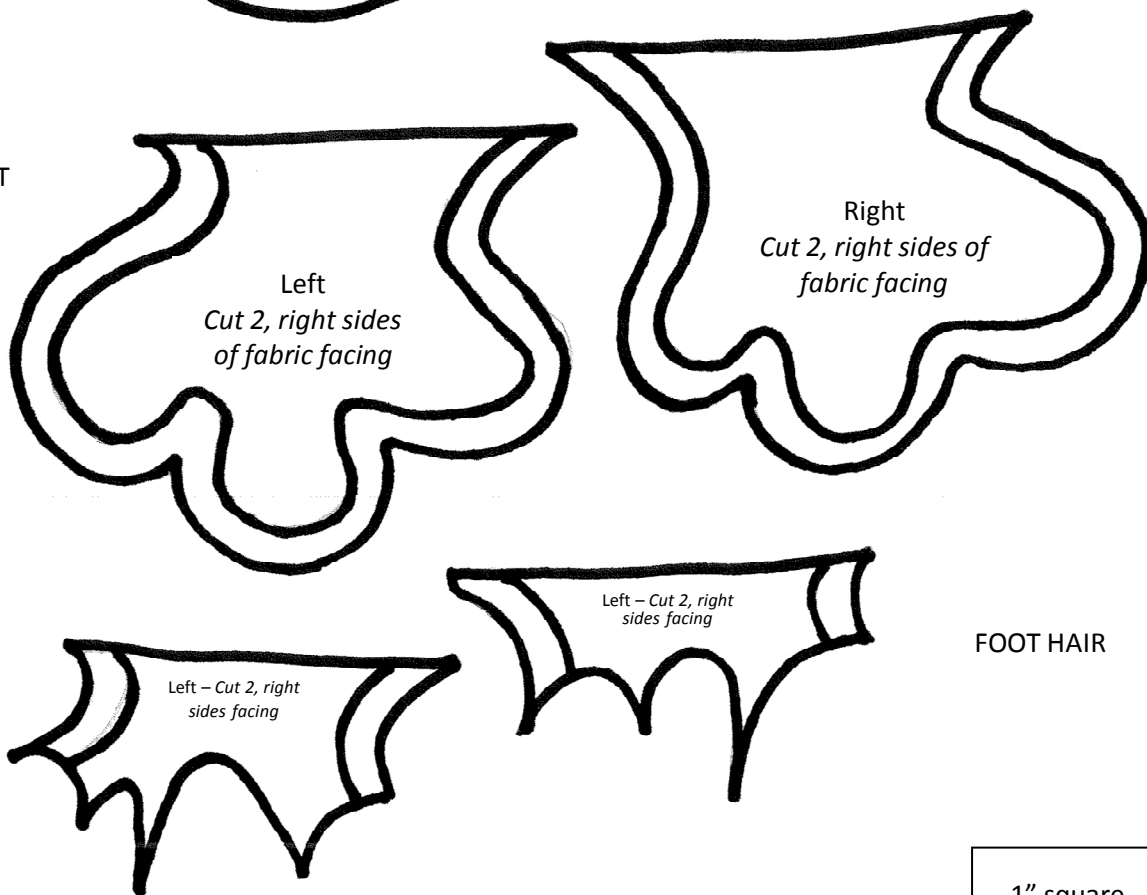
### 5. Stitch around body and turn

- Pin front body to back body. (Make sure that sides of horns and feet are not in the 1/4" seam allowance.) Stitch around 1/4", leaving opening as shown on the pattern for turning.
- Clip curved seams. Turn monster inside out.
- Stuff generously with fiberfill. Fold under edges of opening and pin in place. Hand-stitch together using ladder stitch (for video tutorial, see <http://www.youtube.com/watch?v=5CjOXMuTFXo>).
- Fluff. **Enjoy!**

EYES

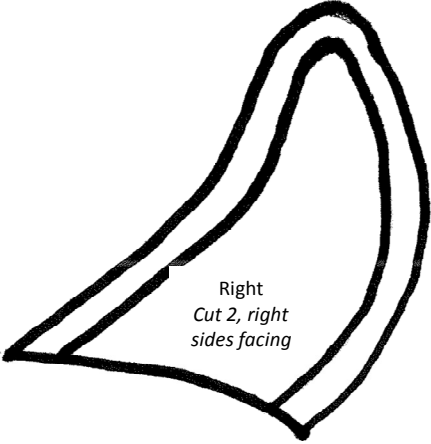
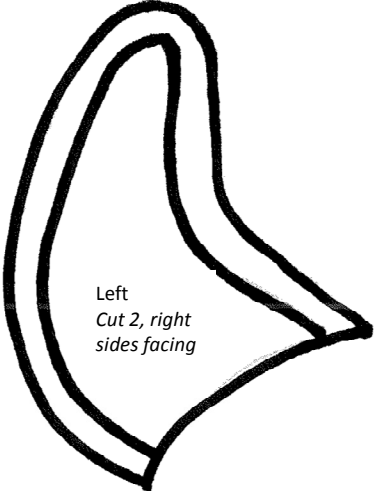
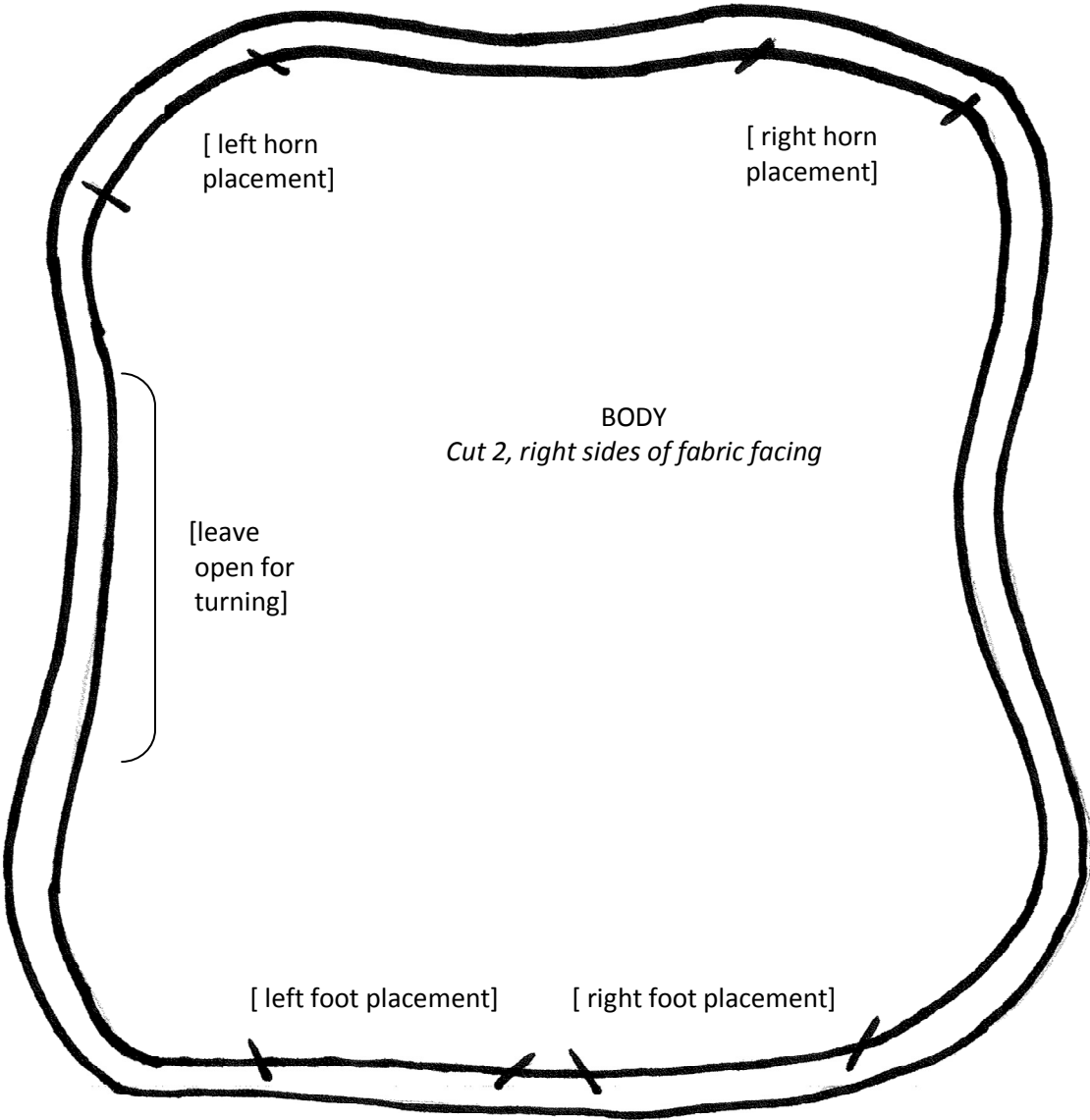


FEET



FOOT HAIR

1" square  
for  
checking  
scale



HORNS

1" square for checking scale